

Operating Manual

WAGNER

WAGNER

WAGNER

Tribo Cup Gun

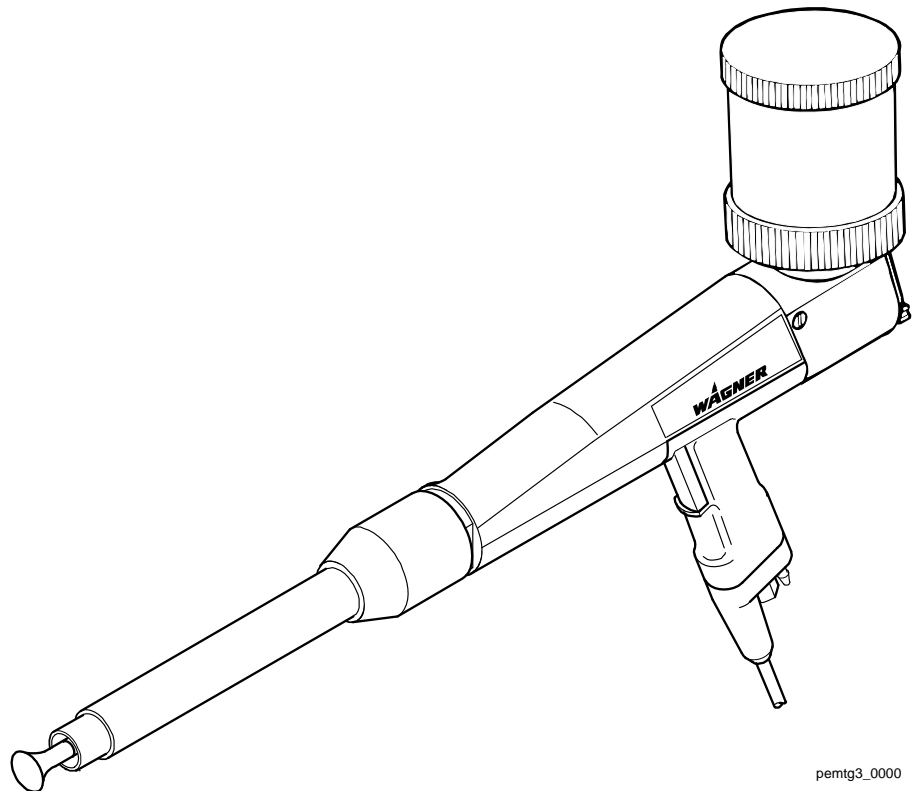
STOP DANGER



High Voltage!
Turn power off
before servicing!

CAUTION

Read rules for safe
operation and
instructions
carefully!



pemtg3_0000

CE
0351967

PEM-TG3



WAGNER

WAGNER

WAGNER

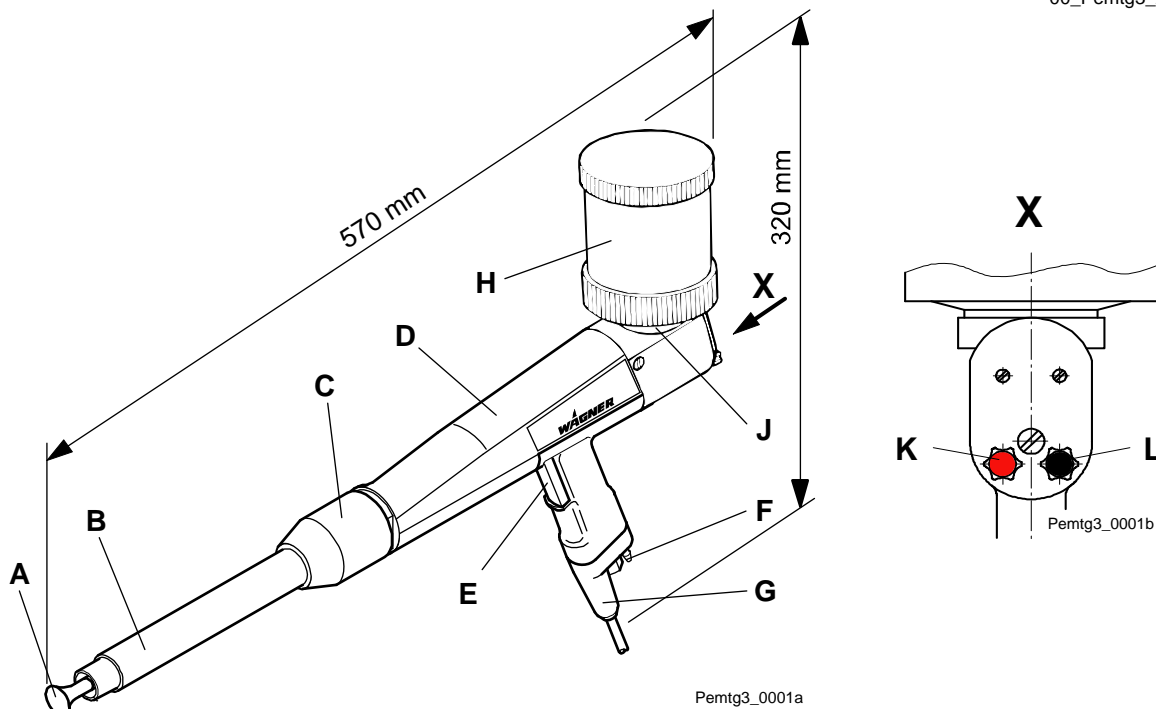
WAGNER

WAGNER

Tribo Cup Gun PEM-TG3

Article No. 0351036

00_Pemtg3_Aufbau.doc



- | | |
|--------------------------|---|
| A Deflector cone | G Electrical connection |
| B Nozzle body | H Powder container with fluidization |
| C Outer nut | J Adapter with integrated powder injector |
| D Spray gun body | K Setting knob red for setting the feed air |
| E Trigger | L Setting knob black for setting the Tribo air |
| F Air supply (input air) | |

The Tribo cup gun **PEM-TG3** is used for processing all coating powders suitable for friction charging.

The Tribo cup gun is mainly suitable for laboratory tests, sample coating and/or low volume production.

By actuating the trigger the compressed air supplies to the gun is turned on. This compressed air is required for Tribo, feed, dosing and fluid air applications.

This cup gun can be operated with the control unit **EPG 2008**.

The cup gun is equipped with a powder container with a capacity of 500 cm³. You can also mounted different powder containers on the cup gun.

You will find the article numbers in chapter [10 "Accessories"](#).



Caution

The operator **must** ensure that the spray gun **PEM-TG3** s only connected to **Wagner** devices!

High room temperatures and, in particular, laying hoses in areas exposed to sunlight in factory buildings **must** be avoided!

To secure the spray guns, the control unit **must** be switched off!

Table of contents		Page
1.	Safety regulations	5
1.1	Safety hints.....	5
1.2	EU Declaration of conformity.....	8
2.	Preparing the spray gun	9
2.1	Selection of the suitable equipment	9
2.2	Mounting the powder container	10
2.3	Connecting the spray gun	10
2.4	Grounding.....	11
3.	Working with the spray guns	12
3.1	Starting up the spray gun and adjusting Tribo air.....	12
3.2	Switching off the spray gun	12
3.3	Performing a color change	13
4.	Maintenance and cleaning.....	15
4.1	Replacing the spray gun.....	15
4.2	Cleaning the spray gun and replacing the wear parts	17
4.3	Check the standard settings.....	18
4.4	Disposal.....	19
5.	Rectification of malfunctions	20
6.	Technical data	21
7.	Applicable safety regulations	22
8.	Warranty.....	23
9.	Scope of delivery and spare parts lists.....	24
9.1	How to order spare parts.....	24
9.2	Scope of delivery and spare parts list PEM-TG3	25
10.	Accessories	27
10.1	Powder container	27
10.2	Special accessory	28

This manual contains information and hints for the service, repair and maintenance of the equipment. The user must obey all the rules of operation found in this manual; failure to do so will render the warranty invalid.

Wagner powder systems are designed to meet the most stringent safety requirements. They can be operated in compliance with generally applicable safety codes and applicable national safety regulations.

Please pay particular attention to the parts marked by the following symbols. Follow the instructions exactly, in the interests of both your own safety and the correct functioning of the unit.



Warning

This symbol draws attention to the fact that if the operating instructions, working instructions, prescribed working sequences etc. are not followed exactly, this can lead to injury or even fatal accidents.



Caution

This symbol indicates that failure to follow the operating instructions, working instructions, prescribed working sequences etc. exactly can lead to material damage.



Hint

This symbol draws your attention to useful additional information and tips. Failure to observe these instructions can cause malfunctions.

1. Safety regulations

1.1 Safety hints

010101_.doc



Warning

This equipment can be dangerous if it is not operated in accordance with this operating manual!

There might be additional regulations to be observed, put into effect by governmental, state or other official agencies or local security (fire) departments!



Warning

Under no circumstance may persons with a cardiac pacemaker come close to the area between the tip of the spray gun and the work piece to be coated!

The following rules must be observed in order to ensure a safe and efficient use of the equipment:

- The user has to observe particularly the safety guidelines of the VdS, the local professional and security institutions.
- Trained and qualified personnel may only operate the electrostatic coating equipment.
- The spray gun may only be operated in powder coating booths or on powder coating stands that are equipped with a ventilation system.
- The user has to make sure, that the average powder/air concentration does not exceed 50% of the LEL (maximum allowed concentration of powder in air). If a reliable LEL value is not available, the average powder/air concentration may not exceed 10 g/m³.
- Over sprayed powder must be reliably collected.
- Adhere to the instructions given by the manufacturers and to the prevalent local laws on the environment when disposing of waste coating powder.
- The main power connection for operation of the Wagner powder equipment **must** be electrically interlocked with the exhaust system of the powder coating booth.
- In the event of faults or defects, repair work is to be performed at the user's discretion.
- The user must conduct periodic checks of the powder spray equipment (at least every year) with regard to explosion-protection.
- Repairs may only be carried out by trained technicians and may never be carried out in an explosion hazardous area. Protective measures against explosions must still be installed.
- The work area **must** have an electrostatically conductive floor (measured in accordance with EN 1081).
- All conductive parts in the work area **must** be electrostatically grounded (work area = 1 m around every spray location or opening in the booth).
- All persons inside the work area **must** wear electrostatically conductive footwear.
- Spray guns should be operated with bare hands! If gloves are used they **must** be made of conductive material.
- **Guideline 94/9/EG:** The device is suited for the applications it was designed for, even in explosion-hazard areas.

Also refer to chapter [7 "Applicable safety regulations"](#).

- **Wear suitable work clothing**
- **Use breathing protection or a vizard for work which produces powder and when developing solvent steams:**

Avoid health dangers by inhalation and skin contacts of solvent steams and lacquer aerosols; Cornea injuries by splashes in the eye.

- **Check the equipment for damage**

Before operating the system, check if slightly damaged parts still function correctly. Check whether the moving parts operate properly, whether they jam and whether parts are damaged.

Damaged parts should be repaired or replaced by a Wagner customer service.



Warning

For your own safety, use only accessories and equipment listed in the operating manual. The use of individual parts other than those recommended in the operating manual may create a hazard to personal safety.

Use only original Wagner replacement parts!

Alteration or repair of Wagner original spare parts may cause fatal accidents or explosions in the coating system!

HAZARD	PREVENTION
<p>Electrostatic arcing may cause an explosion or fire. Mixtures of powder and air can explode or ignite causing property damage and/or severe injury.</p>	<ul style="list-style-type: none"> • Operator must be grounded. Grounding straps must be used when wearing rubber soled shoes. • Operator must remove all metallic objects from his or her person, which are not grounded. • The object being sprayed must be grounded. • All metallic objects within the spray area must be grounded (including spray booth, part hangers, fire extinguishers, etc.) • Grounded conductive floor must be provided in spray area. • Turn off the Power Pack and unplug from outlet before flushing out the gun, cleaning or replacing parts on the gun such as changing tips.
<p>Explosion or fire. Mixtures of powder and air can explode or ignite causing property damage and/or severe injury.</p>	<ul style="list-style-type: none"> • Exhaust and fresh air introduction must be provided to keep the air within the spray area free of accumulation of flammable atmosphere. • Smoking must not be allowed in spray area. • Fire extinguishing equipment must be present and in working order. • Electrostatic arcing must be prevented. (See Electrostatic arcing) • When cleaning the system, use only materials recommended by the coatings manufacturer. Be sure Power Pack is turned off and unplugged. • Avoid all ignition sources such as static electricity sparks, open flames such as pilot lights, hot objects such as cigarettes and sparks from connecting and disconnecting power cords and working light switches. • To prevent hazardous concentrations of flammable atmospheres, spray only in a properly ventilated spray booth. • Never operate spray gun unless ventilation fans are operating properly. • Check and follow all National, State and Local codes regarding air exhaust velocity requirements. • Ventilation must be maintained during the cleaning operation.
<p>Toxic Substances: Some materials may be harmful if swallowed or come in contact with the skin.</p>	<ul style="list-style-type: none"> • Follow the requirements of the Material Safety Data Sheet supplied by the coatings manufacturer. • Exhaust and fresh air introduction must be provided within the spray area to keep the air free of high powder accumulations. • Wear a mask or respirator. Read all instructions for the mask to insure that it will provide the necessary protection against the inhalation of powder.
<p>General</p>	<ul style="list-style-type: none"> • Read all instructions and safety precautions before operating. • Comply with all appropriate local, state and national codes governing ventilation, fire prevention, and operation of Electrostatic equipment usage. • The United States Government Safety Standards have been adopted under the Occupational Safety and Health Act. These standards, particularly the General Standards, Part 1910 and the Construction Standard, Part 1926, should be consulted. • NFPA Standard No. 33 is to be followed when setting up your spray area. Contact the National Fire Protection Association, Batterymarch Park, Quincy, Massachusetts, 02269 for more information. • Check with insurance company for additional requirements. • Use only identical replacement parts. • Personnel must be given training in accordance with the requirements of NFPA Standard No. 33 chapter 18. • It is the duty of all personnel responsible for the spray equipment operation and maintenance to read and understand all safety information furnished with this equipment.

1.2 EU Declaration of conformity

0103_.doc



Wagner hereby declares that the unit described in these operating instructions has been designed and manufactured according to the provisions of EU Directives 98/37/EC, 94/9/EC, 73/23 EEC and 89/336 EEC.

The following **European standards** were applied:

EN 12100-1/-2	EN 50281-1-1/-1-2	EN 61000-6-1
EN 61000-6-2	EN 61000-6-3	EN 60204-1
EN 50053-2	EN 50050	EN 50177

The following **German standards** and/or Guidelines were applied:

BGI 764


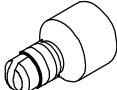
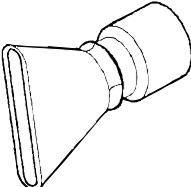
The product includes an **EU declaration of conformity**. This can be ordered again if necessary from your WAGNER dealer by giving details of the product and serial number involved.


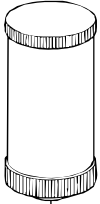
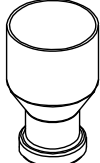
The EU declaration of conformity has the number **0351967**.

2. Preparing the spray gun

2.1 Selection of the suitable equipment

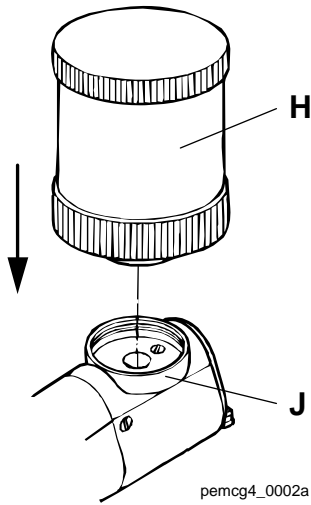
0201_Duesenauswahl_tribo.doc

Nozzle	Overview Application	Spray pattern
Deflector cone 	<ul style="list-style-type: none"> • Wire goods • Grid designs 	Oval powder cloud: Size is dependent on the deflector cone diameter. For powder quantities from: 50 ... 300 g/min
Fan spray nozzle 	Difficult workpieces: <ul style="list-style-type: none"> • Undercuts • Profiles 	Widely spread flat powder cloud. For powder quantities: from 50 ... 150 g/min
Wide fan spray nozzle 	Difficult workpieces: <ul style="list-style-type: none"> • Undercuts • Profiles 	Widely spread flat powder cloud. For powder quantities: from 100 ... 250 g/min

Powder container	Comments
<div style="display: flex; justify-content: space-around; align-items: flex-start;"> <div style="text-align: center;"> <p>500 cm³</p>  </div> <div style="text-align: center;"> <p>900 cm³</p>  </div> <div style="text-align: center;"> <p>220 cm³</p>  </div> </div>	Select the powder container size dependently of the powder volume required for coating.

You will find the article numbers in chapter [10 "Accessories"](#).

2.2 Mounting the powder container



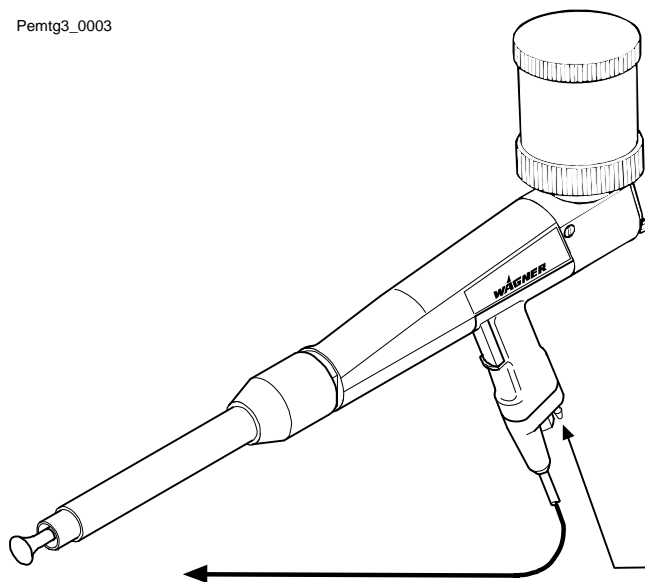
The cup gun is delivered in two dismantled parts:

- spray gun and
- powder container (500 cm³)

Screw the powder container **H** onto the adapter **J**, turning the powder container simultaneously right up to the limit, thus ensuring that it is securely closed.

2.3 Connecting the spray gun

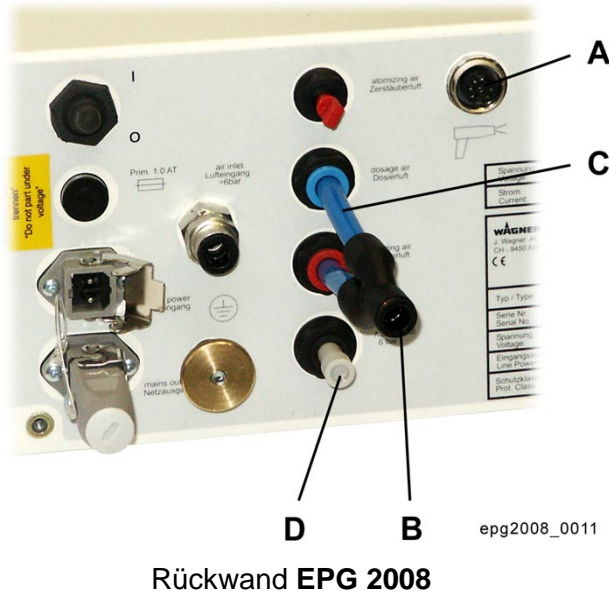
Pemtg3_0003



- Connect the spray gun to the control unit **A** with the electrical cable.
- Connect the black hose (external \varnothing 6x2) for the air supply to the spray gun.

to the electrical connection **A** at the control unit

Air supply **B** from the control unit



- When the spray gun is connected to the **EPG 2008**, then the reduction piece (6/8) must be placed at the other end of the hose and connected to the Y-plug connection **B**.
- The Y-plug connection (8-8) is connected with the two blue hoses (external \varnothing 8x1.5) **C** to the feed and dosage air connection of the EPG 2008.
- The air vent has to be blocked with the stopper **D**.

The required parts are listed in section "[Special accessory](#)".

2.4 Grounding

For safety reasons, the **spray gun must** be properly grounded. This occurs through the electrical cable.

0203_.doc

Good grounding of the **workpiece** is also necessary for optimum powder coating.

A poorly grounded workpiece causes:

- dangerous electric charging of the workpiece
- back-spray onto spray gun and user
- uneven coating
- very bad wrap around



Warning

Sparks between workpiece and conveyor hooks (hangers) can occur if hooks or other hanger parts are not completely cleaned!

These sparks can cause heavy radio frequency interference.

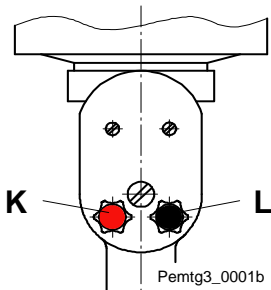
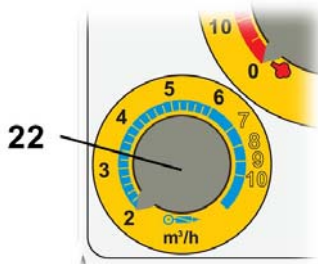
3. Working with the spray guns

3.1 Starting up the spray gun and adjusting Tribo air



Caution

The powder cup may **only be filled up to 75%**, as fluidization swells the volume of the powder.



- Open the powder cup and fill it up to **max. 75%** of the volume with powder, but do not close the cup **yet**.
- Switch on the control unit and with knob **22** adjust the overall air quantity to approximately **3 Nm³/h**.
- Shut off the feed air with the **red** setting knob **K**.
- Actuate the trigger and keep it actuated.
- Check whether sufficient fluid air is present. Correct the fluid air if required as described in chapter [4.3](#).
- Close the powder cup.
- Set the feed air for the desired powder output quantity with the **red** setting knob **K**.
- Correct the Tribo air with the **black** setting knob **L** if required.



Hint

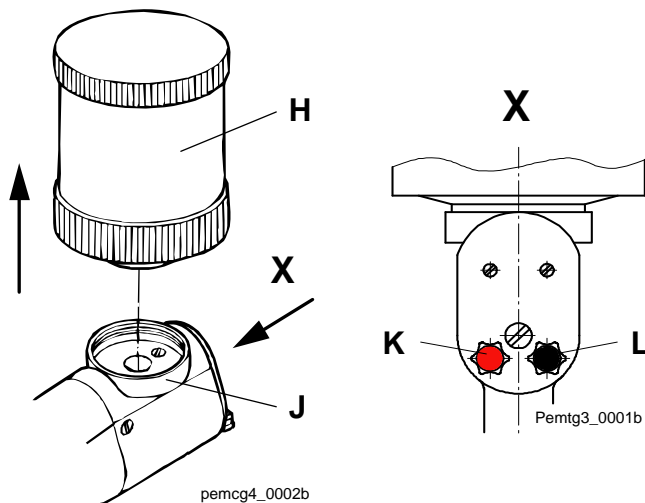
- The amount of fluid air depends on the characteristics of the powder.
- Avoid a build up of powder dust (too much fluid air) in the powder cup!

3.2 Switching off the spray gun

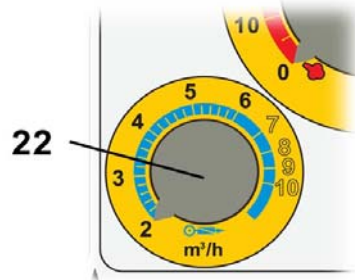


Hint

At every work interruption, blow through the spray gun and the powder feed components and remove any residual powder. These measures help in preventing the build-up of **powder deposits** and **powder surges** when the spray gun is turned on again.



- Release the spray gun trigger.
 - The powder feed is deactivated.
- Remove the powder cup **H** from the adapter **J**.
- With the black setting knob **L** open the Tribo air all the way and with the red setting knob **K** open the feed air all the way.
- Set the overall air quantity to the maximum with knob **22**.
- Hold the spray gun in the coating booth, actuate the spray gun trigger and remove any residual powder inside the spray gun.
- Now the control unit can be switched off.



3.3 Performing a color change

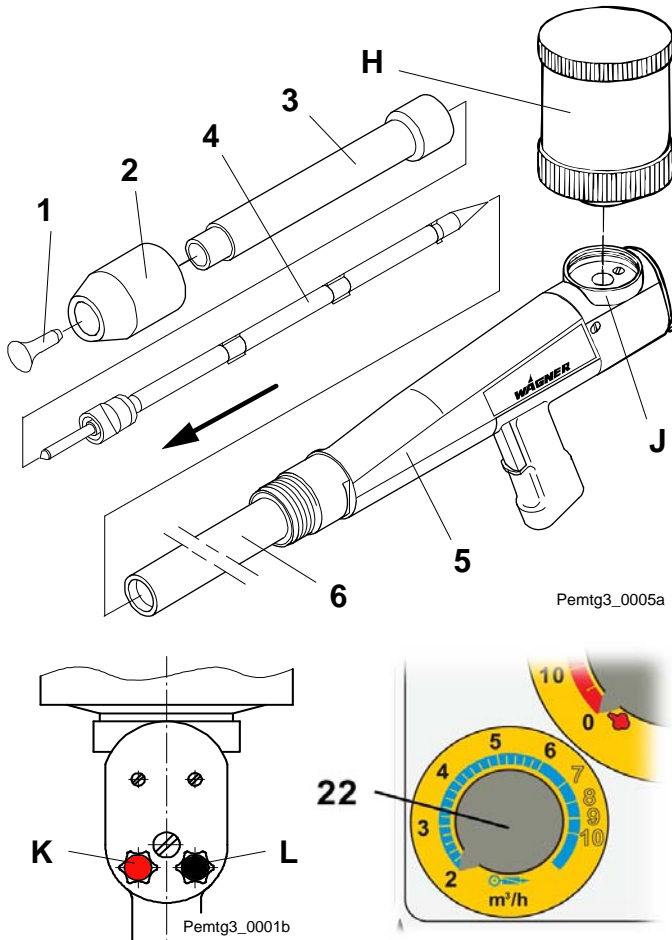
During a color change all parts carrying powder **must** be **thoroughly** cleaned of powder residue. In the following only the procedure for the powder spray gun is described.



Hint

Use a separate cup for each color if you want to shorten the cleaning time of the powder cup.

- Release the spray gun trigger.
 - The powder feed is deactivated.



- Unscrew the powder cup **H** from the adapter **J**.
- With the black setting knob **L** open the Tribo air all the way and with the **red** setting knob **K** open the feed air all the way.
- Set the overall air quantity to the maximum with knob **22**.
- Hold the spray gun in the coating booth, actuate the spray gun trigger and remove any residual powder inside the spray gun.
- Switch the control unit off and secure it against being unintentionally switched on again.
- Pull the deflector cone **1** off the charging body **4**.
- Unscrew the outer nut **2** from the spray gun housing **5**.
- Carefully pull the nozzle body **3** off the powder tube **6**.
- Carefully pull the charging body **4** out of the powder tube **6**.





Caution

When pulling out and inserting the parts, ensure that the charging body is not damaged!

- Remove powder residue from the parts removed, from the spray gun and the powder container.
- Mount the cleaned or a new powder container.
- Carefully push the charging body **4** into the powder tube **6**.
- Push the nozzle body **3** over the powder tube **6** and tighten using the outer nut **2**.
- Slide the deflector cone **1** back over the charging body **4**.
- Activate the spray guns in accordance with chapter:

["Starting up the spray gun and adjusting Tribo air"](#).

4. Maintenance and cleaning

 WARNING	 CAUTION
<p>WHEN CLEANING THE ELECTROSTATIC SYSTEM, THESE SAFETY PROCEDURES MUST BE FOLLOWED. FAILURE TO FOLLOW THESE PROCEDURES MAY RESULT IN AN EXPLOSION/FIRE.</p> <ul style="list-style-type: none"> • Turn power pack to the "OFF" position and unplug from power source before starting to clean. • Exhaust and fresh air introduction must be maintained during the clean up operation. • Keep cleaning materials in approved safety containers. • All personnel and cleaning equipment, including container used in cleaning operation, must be grounded. • DO NOT turn on the POWER PACK until the cleaning operation has been completed, all cleaning materials have been removed from spray area, and spray area is free of any mixtures of powder and air produced by the cleaning operation. • If defects in the equipment are found, DO NOT use until repairs are completed. 	<ul style="list-style-type: none"> • Clean equipment immediately after use. • NEVER IMMERSE SPRAY GUN OR PARTS OF IT IN ANY FLUID AT ANY TIME. • Be sure the Power Pack is turned off and unplugged from the power source. <p style="text-align: center;">NOTE</p> <ul style="list-style-type: none"> • The powder passages of the spray gun should be cleaned while cleaning the powder hose and powder pump, following instructions, provided with the powder pump (injector). (See powder injector operating manual) • Clean the spray tip by removing from spray gun, flushing with air and replacing on spray gun.

4.1 Replacing the spray gun

0401_ .doc

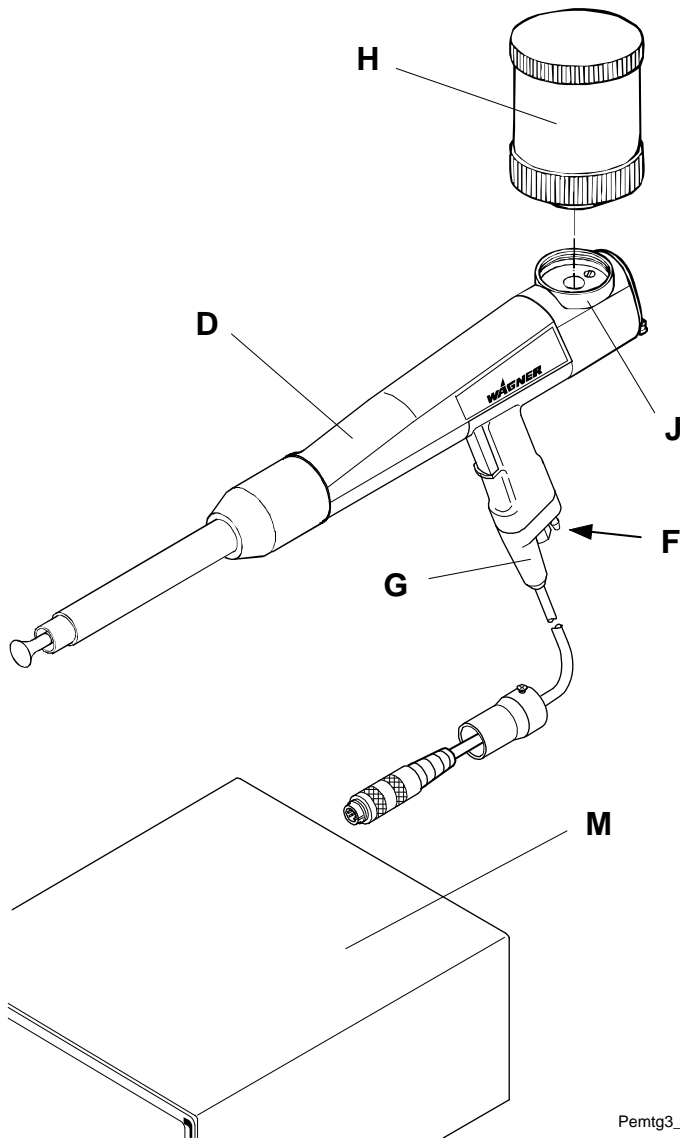
Before you commence the replacement of the spray gun any powder residue **must** be removed **thoroughly**.



Caution

Repair or replacement of the spray gun or parts of the spray gun are only allowed to be performed outside the hazard area and in a suitable place by specialist personnel!

The wearing parts in the spray gun, marked in the spare parts list with *, must be regularly checked and, if necessary replaced.



- Switch the control unit and/or the powder feed off.
- Unscrew the powder container **H** from the adapter **J**.
- Remove the air supply (input air) **F** from the spray gun **D**.
- Remove the electrical cable **H** from the control unit **K**.

Pemt3_0004

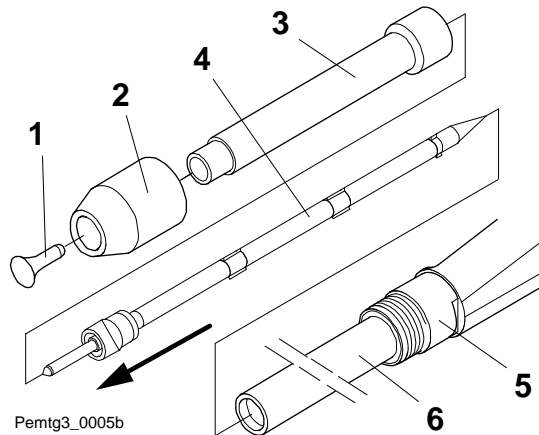
4.2 Cleaning the spray gun and replacing the wear parts



Caution

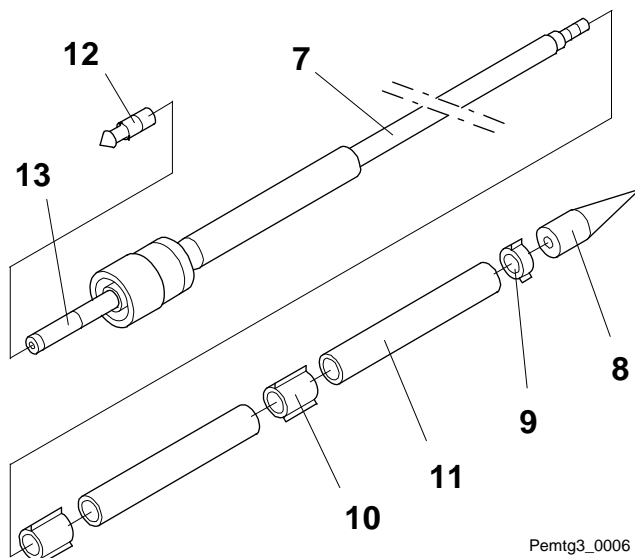
Never place the spray gun or parts of the spray gun in cleaning agent!

When pulling out and inserting the wear parts, ensure that the charging body is not damaged!



- Pull the deflector cone 1 off the charging body 4.
- Unscrew the outer nut 2 from the spray gun housing 5.
- Carefully pull the nozzle body 3 off the powder tube 6.
- Carefully pull the charging body 4 out of the powder tube 6.
- Check the removed parts for wear. The entire charging body can be replaced with a new one.

It is also possible to dismantle the charging body and merely replace the parts affected by wear.



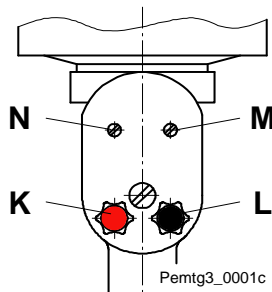
- Carefully Unscrew the tip 8 from the threaded rod 7 and dismantle the charging body.
- Unscrew the air nozzle 12 from the deflector cone rod 13 if worn and replace it with a new one.
- Complete clean residual powder from all parts.
- Replace worn parts with new ones.
- Reassemble the charging body.
- Carefully push the charging body into the gun and reassemble the gun.

4.3 Check the standard settings

The spray gun has been set at the factory to provide the optimum spray cloud with standard powders:

Input air pressure:	max. 43.5 psi (3 bar)
Powder output quantity:	max. 200 g/min
Type of powder:	Standard powders with grain size distribution of 35 ... 40% < 32 µm

- Check the input air pressure and readjust it if required.
- Check the fluid base of the powder container for damage and replace with a new one if required.



- K** Feed air adjustment 1)
- L** Tribo air adjustment 1)
- M** Dosage air adjustment 1)
- N** Fluid air adjustment 1)

1) Rotate counter-clockwise to increase the values.



Caution

Never turn the spindles **M and **N** all the way in (danger of damaging the parts!).**

By adjusting the dosage air **M** and/or the Tribo air **L** the powder cloud can be readjusted or reset if required.

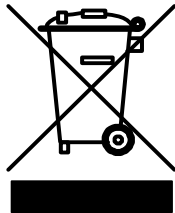


Hint

Normally, the dosage air **M** and the atomizing air **N** do not have to be adjusted.

4.4 Disposal

04_Entsorgung.doc

	<p>Only for EU countries</p> <p>Do not dispose of electric tools together with household waste material!</p> <p>In observance of the European Directive 2002/96/EC on waste electrical and electronic equipment and implementation in accordance with national law, this product is not to be disposed of together with household waste material but must be recycled in an environmentally friendly way!</p>
---	--

Wagner or one of our dealers will take back your used Wagner waste electrical or electronic equipment and will dispose of it for you in an environmentally friendly way. Please ask your local Wagner service center or dealer for details or contact us direct.

5. Rectification of malfunctions

Malfunction	Cause	Rectification
No Tribo current display on PEM-TG3	<ul style="list-style-type: none"> - Fault in the monitoring device - Electrical cable from spray gun to control unit faulty - Unfit powder used - Wear 	<ul style="list-style-type: none"> - Contact Wagner Service - Use suitable powder - Replace worn parts
Poor wrap around Back spray	<ul style="list-style-type: none"> - Inadequate or no ground 	<ul style="list-style-type: none"> - See chapter 2.4
Pulveraustritt ungleichmäßig oder nicht ausreichend.	<ul style="list-style-type: none"> - Bad compressed air supply - Powder container is not sitting tightly - Soiling in the powder - Blockages in the gun - Feed air / dosage air ratio incorrect - Wear 	<ul style="list-style-type: none"> - Check compressed air supply - Tighten powder container properly - Empty the powder container and blow through powder air channels - Dismantle spray gun and clean the parts in accordance with chapter 3.3 - Redetermine the feed air- / dosage air ratio in accordance with chapter 4.3 - Replace worn parts
Spray pattern is uneven	<ul style="list-style-type: none"> - Nozzle system wear 	<ul style="list-style-type: none"> - Replace nozzle system in accordance with chapter 4.2
Fluidization inadequate or has failed	<ul style="list-style-type: none"> - Fluid air too low - Powder container is not sitting tightly - Soiling or blockage of fluidized bed - Wear 	<ul style="list-style-type: none"> - Readjust the fluid air with the spindle N in accordance with chapter 4.3 - Retighten the powder container - Clean fluidized bed connection and fluidization disc - Change worn out parts (e.g. fluidization disc)
No powder output	<ul style="list-style-type: none"> - The powder container is empty - The spray gun is clogged 	<ul style="list-style-type: none"> - Refill with powder - Blow through the spray gun

6. Technical data

Weight: 990 g

Electrical:

Design: as per EN 50177 and EN 50050
 Protection class: IP 54

Pneumatic:

Input air pressure: max. 29 psi (2 bar - standard setting)
 Powder output quantity: max. 200 g/min at 43.5 psi (3 bar)

06_.doc

Required compressed air quality:

Quality class	Compressed air quality according to ISO 8573.1	
5	Max. residual water: (pressure dew point in °F at 100 psi / °C at 700 kPa)	+44.6 °F / +7 °C
2	Max. oil contents:	0.1 mg oil/m ³ / 0.1 oz/ft ³
3	Max. concentration:	5 mg/m ³ / 5 oz/ft ³
3	Max. particle size:	5 µm / 5 microns

Ambient conditions:

If low temperature powders are used, the ambient temperature may have to be lower than 86 °F (30 °C).



Volume measures:

For volumes, specified in Nm³ (standard cubic meters). One cubic meter of a gas at 32 °F (0 °C) and 1.013 bar is called norm cubic meter.

1 Nm³/h = 35.3 ft³/h; 1 bar = 14.504 psi

7. Applicable safety regulations

07_.doc

EN 12100-1/-2	Machine Safety	(Beuth-Verlag, Berlin)
EN 50281-1-1/-1-2	Electrical equipment for use in areas with flammable dust	(Beuth-Verlag, Berlin)
EN 61000-6-1	Electro-magnetic compatibility (EMC) Generic standard resistance to interference	(Beuth-Verlag, Berlin)
EN 61000-6-2	Electro-magnetic compatibility (EMC) Basic Standards – Interference resistance within industry	(Beuth-Verlag, Berlin)
EN 61000-6-3	Electro-magnetic compatibility (EMC) Generic standard interference emissions	(Beuth-Verlag, Berlin)
EN 60204-1	VDE guidelines for the electrical equipment of machines	(Beuth-Verlag, Berlin)
BGI 764	Safety regulations for electrostatic powder coating in coating equipment's (Operating conditions)	(C. Heymanns-Verlag, Cologne)
BGR 132 (ZH1/200)	Safety regulations governing prevention of combustion during electrical charging	(C. Heymanns-Verlag, Cologne)
EN 12981	Safety requirements for coating equipment in spray booths for organic powder	(Beuth-Verlag, Berlin)
EN 50050	Electrostatic manual powder coating equipment	(Beuth-Verlag, Berlin)
EN 50053-2	Regulations for selecting, installing and operating electrostatic powder coating systems, electrostatic manual powder coating systems	(Beuth-Verlag, Berlin)
VDE 0132	Instructions for fire fighting in electric equipment and nearby	(Beuth-Verlag, Berlin)
VdS 2093 and VdS 2325	Safety regulations governing CO ₂ fire extinguishers	(VdS Box 10 20 24 50460 Cologne)
VDE 0134	Instructions for first aid in case of accident	(Beuth-Verlag, Berlin)

8. Warranty

08_.doc

What is covered by this warranty?

Faulty or defective parts are replaced according to our general delivery conditions.

Within the applicable warrant period, Wagner will repair or replace, at our option, defective parts without charge if such parts are returned with transportation charges prepaid to the nearest authorized service center. If Wagner is unable to repair this product so as to conform to this Limited Warranty after a reasonable number of attempts, Wagner will provide, at our option, either a replacement for this product or a full refund of the purchase price of this product.

These remedies are the sole and exclusive remedies available for breach of express and implied warranties.

What is not covered by this warranty?

This warranty does not cover any of the following damages or defects:

1. Damages or defects caused by use or installation of repair or replacement parts or accessories not manufactured by Wagner,
2. Damages or defects caused by repair performed by anyone other than a Wagner authorized service center, or
3. Damages or defects caused by or related to abrasion, corrosion, abuse, misuse, negligence, accident, normal wear, faulty installation or tampering in a manner which impairs normal operation.

Limitation of remedies:

IN NO CASE SHALL WAGNER BE LIABLE FOR ANY INCIDENTAL, SPECIAL OR CONSEQUENTIAL DAMAGES OR LOSS, INCLUDING TRANSPORTATION COSTS, WHETHER SUCH DAMAGES ARE BASED UPON A BREACH OF EXPRESS OR IMPLIED WARRANTIES, BREACH OF CONTRACT, NEGLIGENCE, STRICT TORT, OR ANY OTHER LEGAL THEORY.

Disclaimer of implied warranties:

THE FOREGOING WARRANTIES ARE IN LIEU OF ALL OTHER WARRANTIES, EXPRESS OR IMPLIED, INCLUDING BUT NOT LIMITED TO THE IMPLIED WARRANTIES OF MERCHANTABILITY AND FITNESS FOR A PARTICULAR PURPOSE.

No ability to transfer:

This warranty is extended to the original purchaser only and is not transferable.

Your rights under state law:

Some states do not allow limitations on how long an implied warranty lasts or the exclusion of incidental or consequential damages, so the above limitation and exclusion may not apply to you. This warranty gives you specific legal rights; you may also be entitled to other rights, which vary from state to state.

9. Scope of delivery and spare parts lists

9.1 How to order spare parts

0901_.doc

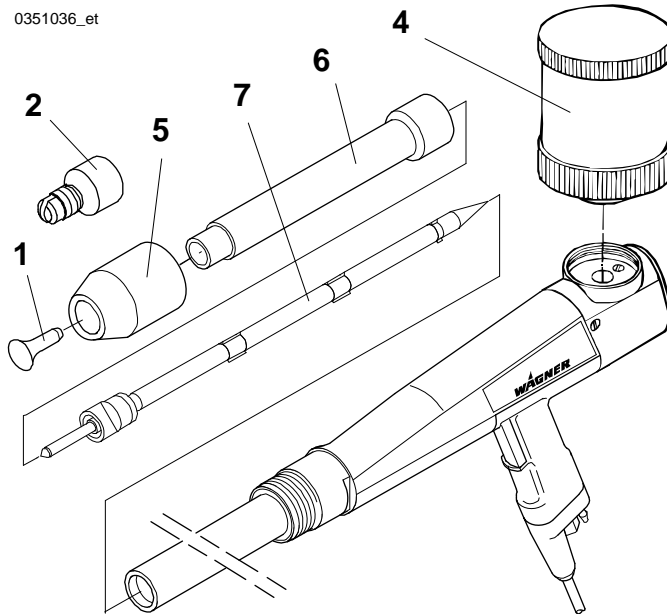
Faulty and unserviceable parts are replaced in accordance with our General Terms and Conditions of Delivery.

In order to be able to guarantee safe and smooth spare parts delivery, the following information is necessary:

- **Invoicing address**
- **Delivery address**
- **Name of contact persons for check back**
- **Type of delivery**
- **Quantity ordered, article number and designation**

9.2 Scope of delivery and spare parts list PEM-TG3

0351036

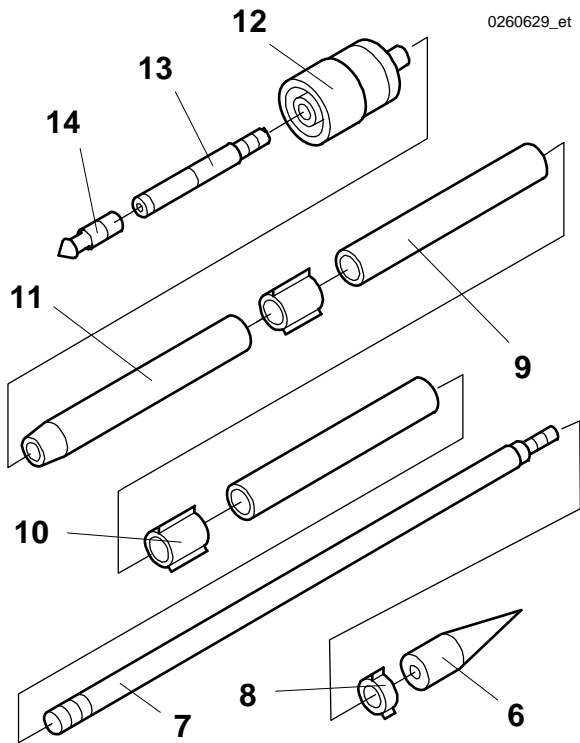


Item	Article No.	Description
--	0351036	Spray gun PEM-TG3
1	0259474 *	Deflector cone (Ø22)
1	0259475 *	Deflector cone (Ø28) **
2	0260928 *	Fan spray nozzle
4	3050701	Powder container 500 cm ³
5	0351654	Tribo outer nut ET
6	0351581	Nozzle body
7	0260629 *	Charging body (complete)
--	9982079	Hose (black) external Ø 6x1: Pneumatic line from the Y-piece of the EPG 2008 to the compressed air connection on the spray gun: <ul style="list-style-type: none"> • also refer to chapter "Special accessory"
--	9998137	Reduction 8/6: to connect the pneumatic line to the Y-piece on the EPG 2008 : <ul style="list-style-type: none"> • also refer to chapter "Special accessory"

* Wearing part

** Special accessory

0260629



0260629_et

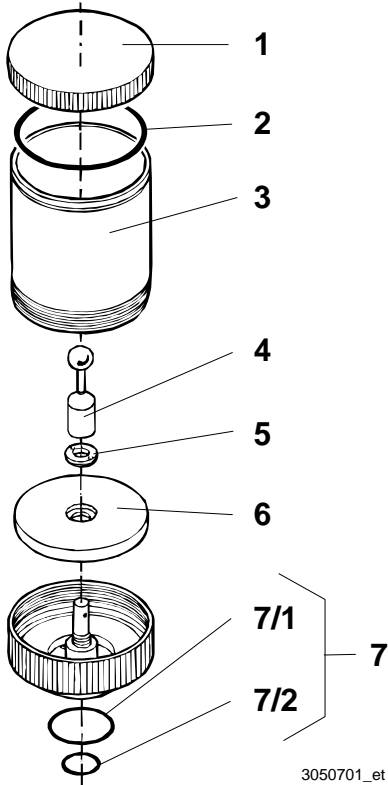
Item	Art. No.	Designation
--	0260629	Charging body (complete)
6	0260472 *	Tip
7	0260473	Threaded bar
8	0260474 *	Ring
9	0260471 *	Charging tube
10	0260476 *	Support ring
11	0260470 *	Rod
12	0260463 *	Central air supply
13	0260469 *	Deflector cone rod
14	0260632 *	Air nozzle (complete)

* Wearing part

10. Accessories

10.1 Powder container

3050701



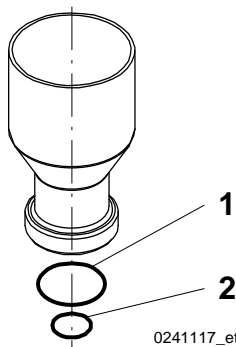
3050701_et

Item	Art. No.	Designation
--	3050701	Powder container 500 cm³
--	3053662	Powder container 900 cm³
1	3050737 *	Container lid
2	3050748 *	O-ring 80x2
3	3050735	Cup tube 500 cm ³
3	3050736	Cup tube 900 cm ³
4	3050734	Cover
5	3050739	Nut
6	3050738 *	Fluidization disc
7	3050733	Cup socket **
7/1	3050742 *	O-ring 39x2
7/2	9971137 *	O-ring 20x2

* Wearing part

** Only available as a set

0241117



0241117_et

Item	Art. No.	Designation
--	0241117	Powder container 220 cm³
1	3050742 *	O-ring 39x2
2	9971137 *	O-ring 20x2

* Wearing part

10.2 Special accessory

The following parts are not included in the scope of delivery of the cup gun and have to be ordered separately.

These parts are necessary to connect the spray gun to the **EPG 2008**.

3159464	Y- plug connection (8-8)
9982062	Blue hose (external \varnothing 8x1.25)



ADDRESSES

Germany

J. WAGNER GmbH
Otto-Lilienthal-Str. 18
D-88677 Markdorf

Phone +49(0)7544/505-0
Fax +49(0)7544/505-200

Switzerland

J. WAGNER AG
Postfach 109
Industriestrasse 22
CH-9450 Altstätten

Phone +41(0)71/7572211
Fax +41(0)71/7572222

Austria

J. WAGNER GmbH
Otto-Lilienthal-Str. 18
Postfach 1120
D- 88677 Markdorf

Phone: ++49/ (0)7544 / 5050
Fax: ++49/ (0)7544 / 505200

Netherlands

Wagner Systemen Nederland B.V.
Proostwetering 105 C
NL-3543 AC UTRECHT

Phone +31(0)30/2410688
Fax +31(0)30/2410765

Belgium

Estee Industries
Leenbeekstraat 9
B-9770 Kruishoutem

Phone +32(0)9/3885410
Fax +32(0)9/3885440

Denmark

WAGNER Powder Systems Scvandinavia
Juupajokivej 8
DK-8850 Bjerringbro

Phone +45 7023 2052
Fax +45 8668 2052

Sweden

WAGNER Powder Systems Scandinavia AB
Hedenstorpsvägen 4
Sverige - 55593 Jönköping

Phone +46(0)36/341590
Fax +46(0)36/368580

Great Britain

WAGNER Spraytech (UK) Ltd.
Unit 3 Haslemere Way
Tramway Industrial Estate
UK-Banbury, Oxon OX 16 8TY

Phone +44-1295-265353
Fax +44-1295-269861

USA

WAGNER Systems Inc.
175 Della Court
Carol Stream, IL 60188

Phone +1(0)630/7848900
Fax +1(0)630/7848970

Japan

WAGNER- HOSOKAWA Micron Ltd.
No. 9, 1-Chome
Shodal Tajka, Hirakata-Shi
Osaka 673-1132

Phone +81(0)728/566751
Fax +81(0)728/573722

China

WAGNER SPRAYTECH SHANGHAI CO LDT.
4th Flr, No. 395 Jiangchangxi Road
Shibei Industrial Zone
Shanghai, 200436

Phone +86(0)2166521858
Fax +86(0)2166529819

France

J. Wagner France SARL
B.P. 75, 5, Avenue du 1er Mai
F-91122 Palaiseau-Cédex

Phone +33(0)825/011111
Fax +33(0)1/69817257

Italy

WAGNER Itep S.p.A.
Via Santa Vecchia, 109
I-22049 Valmadrera - LC

Phone +39/0341/212211
Fax +39/0341/210200

Spain

WAGNER Spraytech Iberia S.A.
P.O.Boc, 132, Crtra. N-340, Km. 1245,4
E-08750 Molins de Rei (Barcelona)

Phone +34(0)93/6800028
Fax +34(0)93/6800555