



The WAGNER PXS powder centers are the benchmark for top coating quality with high performance components efficiently integrated into a floor space-saving footprint. The PXS comes as either a stand-alone powder center for retrofits or as an integral control system for all system components including application equipment, moving devices, booth and powder dust collector.

- User-friendly operation
- All controls in one single cabinet
- Intuitive color touchscreen display with equipment icons for simplified operation and programming
- Automatic optimization function that sets new standards in color changing - resulting in increased efficiency and less powder usage
- Modular design can be configured for either single or multicolor operation

## High Precision Feeding and Reproducibility

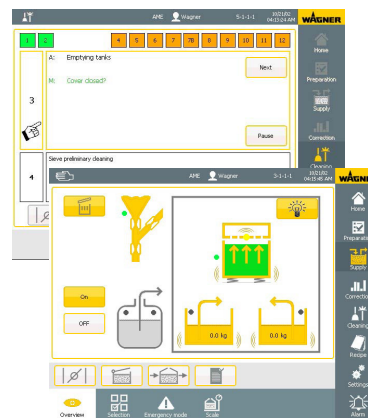
- Precise EPG S2 control units with AFC (Air Flow Control) closed loop technology

## Optimal Powder Conditioning for Excellent Coating Results

- Short powder feed path design
- Powder container is both fluidized and vibrated automatically
- Powder container is completely enclosed
- Constant negative-pressure air flow within powder enclosure ensures powder containment during normal, routine maintenance of venturis and sieve and is automatically increased during color cycle change

## Powder Consumption Measurement and Documentation

- Integrated load cell
- USB port or Ethernet connection for data download



## Easy Operation and Reproducible Color Change

- On-screen operator step-by-step guidance

## Top Quality Coating Results

- Optimal ultrasonic screen with "cool sieve" technology

## High Equipment Uptime Via Long-Lasting Components and Simplified Servicing

- High-performance powder injector has quick release feature that allows replacement of collector nozzles in less than 5 seconds
- Integrated service plan ensures consistent, reproducible coating results



**PXS**

# Powder Management Center

The WAGNER **PXS** powder center does more than just provide state-of-the-art powder control and distribution, it also allows programming and operation of the entire coating system through a single point of control.

## Versions

Configuration	PXS 26	PXS 36	Accessories / Variants
Max. Number of Injectors	26	36	PI-PXS / PI-PXS HiCoat
Powder Container	Fluidizes and vibrates		
Powder level monitoring	Minimum / working level / overfull		
Operation	Color touch screen with professional visualization for intuitive operation		
PXS Control	Standard	Standard	
Control Application / Booth Integrated	Integral ProfiTech M Integral ProfiTech S		Note: Requires 1,000 m <sup>3</sup> / h (588 CFM) additional air volume from dust collector
Powder Extraction Through Dust Collector	Standard	Standard	
Fresh Powder Supply From:	1 Box (standard), 2 boxes (optional) 1 Fluidized container (optional) 1 external Big Bag (optional)		Fluidized container, WAGNER Big Bag with 1 or 2 IP5000
Vibrating Table for Fresh Powder Box	Standard	Standard	
Fluidization for fresh powder	Standard	Standard	Local fluidization of the suction lance
WAGNER "Cool Sieve" Ultrasonic Screen	Optional	Optional	Replacement screens 200 µm, 160µm

**WAGNER Systems Inc.**

**Powder Division**

1770 Fernbrook Lane  
Plymouth, MN 55447  
T 800.473.2524  
F 630.503.2377

**Liquid Division**

337 South Arthur Ave  
Louisville, CO 80027  
T 888.820.4498  
F 303.438.5708

[www.wagnersystemsinc.com](http://www.wagnersystemsinc.com)

